

January 2024

Parental Survey Results



Leigh Academy
Dartford



**Agree or
strongly agree(%)**

My child/children are happy at this school

98.5%

My child/children feels safe at this school

97%

My child is well taught at this school

97.7%

The school makes sure its pupils are well behaved

93.9%

The school makes me aware of what my child will learn during the year

97%

My child makes good progress at this school

100%

My child does well at this school

96.2%

My child can take part in clubs and activities at this school

93.9%





Leigh Academy
Dartford

January 2024 Pupil Survey Results

	Agree or strongly agree(%)
Teachers help me to do my best	91.4%
Teachers listen to what I have to say in lessons	94.7%
There is an adult at school I can talk to if something is worrying me	94.5%
I feel safe when I am at school	94%
My school encourages me to look after my emotional and mental health	97%
My school encourages me to be independent and to take on responsibilities	97%
My school encourages me to respect people from other backgrounds and to treat everyone equally	97.8%
My school encourages me to look after my physical health	97%
The IB PYP curriculum at school has helped my learning	94.3%



January 2024 Parent Comments



'My son seems happy here. He is being taught well and he is kept safe.'

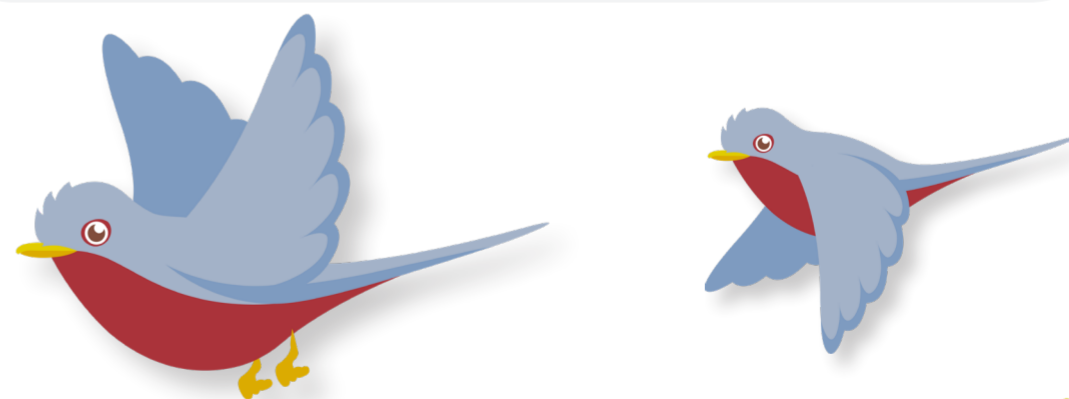
'I think the school is able to recognise high achievers within the classes and stretch and challenge those who are able.'

'The school supports my child's emotional needs as well as their educational needs.'

'The SEN support in place and SEN engagement with parents is impressive. The coffee mornings and support have been a lifeline and taught me some vital strategies to help my child.'

'It puts our children first, and provides a safe fun environment for my children to learn in and excel in their education.'

'Communication is very good. The school is disciplined and cares very much for children's development.'



January 2024 Parent Comments



'The school looks after my child's wellbeing and interacts well.'

'The school ensures the children are always in line with the school's motto.'

'I think the staff are very approachable and keep parents up-to-date with information.'

'The children are celebrated which is great to see as it is so important to boost their self esteem.'

'I believe the school has a good variety of extra activities available for the children.'

'The school delivers appropriately paced teaching and support to children while effectively coordinating with parents.'

